

RUN BY VETS, OWNED BY VETS



EQUUS VETS NEWSLETTER

JANUARY 2026

Would you like to have your horse on the cover of our Equus Newsletter

With our new design, we are offering the opportunity for you to be our cover picture for the month in the space above.

If you have a picture of your horse or you with your horse that makes you smile and you would like to share it, please send it to us at georgie.brown@equusvets.co.uk to be included in our Newsletter.

To start us off we have included a picture of Rachel (our receptionist) with her lovely Curly who had a great start to the year with not only winning at their first outing, they also got the best result for the day.

Be prepared for sweet itch season

We have reached the time of year when it is a good to start considering different options for the the management of Sweet Itch.

This could be prevention measures that you as an owner can carry out such as rugging/gradually adjusting your horses routine to avoid turnout at 'peak midge times' through to possible veterinary prevention interventions.

If you would like to discuss potential veterinary options that would be timely to be given over the next few weeks, please call our reception team who can get one of our vets to discuss options for your horse.

ROUTINE DENTALS

Routine dental care is highly important in keeping your horse comfortable and preventing issues arising.

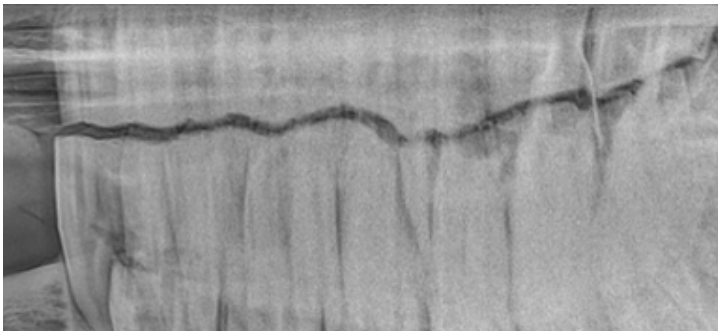
Common problems seen in horses include:

Sharp points

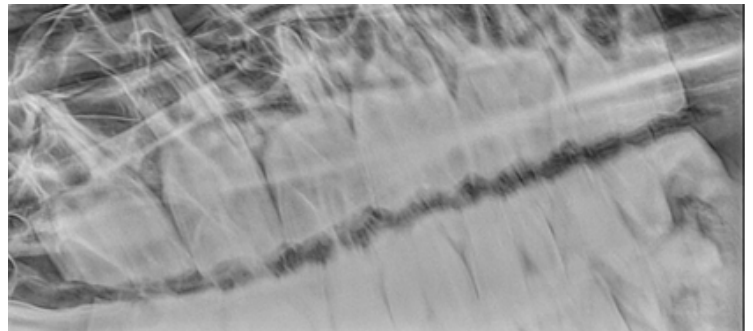
The most common issue seen in almost all horses. When the horse chews, the teeth wear slightly unevenly, generating sharp points that can rub against the sides of the cheek and tongue. In more severe cases, this can lead to ulceration of the tongue or cheeks. Treatment involves rasping the sharp points, which for most horses is required every 6-12 months.

Imbalances (eg step mouth and wave mouth)

Teeth can wear or grow unevenly, which can cause some teeth to be longer or shorter than the rest of the mouth. This can make chewing uncomfortable and can lead to quidding. Treatment involves reducing the overgrown teeth so they sit more comfortably in the mouth.



An unbalanced mouth where some crowns are longer than others so the teeth are poorly aligned



A well balanced mouth where the teeth sit neatly in alignment with each other

EAST CORNWALL **AREA DAYS**

w/c 9th February
w/c 23rd February

DID YOU KNOW.....

Horses produce
approximately 10 gallons
of saliva a day!!



Diastemas

Diastemas are gaps between the teeth (as shown in the picture to the left in the red circle), which can pack with food. This in itself is uncomfortable and can also provide an ingress for bacteria and lead to infection of the tooth roots.

Diseased teeth and tooth root abscesses

Occasionally tooth roots can become infected or diseased, which can lead to pain when chewing, discharging tracts of pus (seen as either an abscess on the lower jaw or a nasal discharge from one nostril) and loose teeth. Removal is normally required for these teeth.



It is good practice to have your horse's teeth checked at a minimum once a year. Your vet or qualified dentist will then advise if more regular checks are required based on what they find.

If you think it has been a while since your horses have been seen and we are coming out to you on a visit for something else, we will gladly carry out a free check and advise if any dental work is required and an appointment is needing made.

PROVIDING YOU WITH A DEDICATED AND EXPERIENCED TEAM OF EQUINE ONLY VETS, 24 HOURS A DAY, 7 DAYS A WEEK COVERING DEVON AND EAST CORNWALL



01837 214004



www.equusvets.co.uk



info@equusvets.co.uk